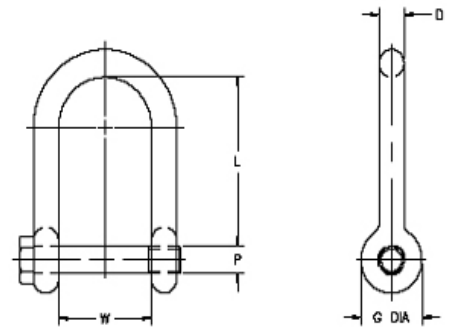


# SHACKLES

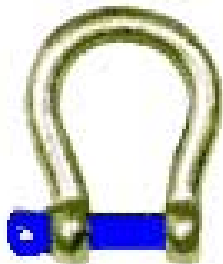


## LONG REACH SHACKLES



SIZE	WEIGHT	WORKING LOAD LIMIT	DIMENSIONS (INCH)					UNIT	SCREW PIN STOCK NO.	BOLT TYPE STOCK NO.
			P	D	L	W	G			
5/8"	1.8 LBS	7,000 LBS	0.75	0.63	4.00	2.25	1.57	EA	554570	
3/4"	2.72 LBS	10,000 LBS	0.88	0.75	4.56	2.75	1.81	EA	554574	
1"	5.86 LBS	19,000 LBS	1.00	1.00	5.50	3.25	2.38	EA	554582	
1-1/4"	11.90 LBS	28,000 LBS	1.38	1.25	6.25	3.88	3.06	EA	554590	
1-1/2"	19.60 LBS	34,000 LBS	1.63	1.50	7.00	4.50	3.50	EA	554598	
2"	30.70 LBS	50,000 LBS	2.00	1.75	8.00	5.25	4.00	EA	554599	

## COMMERCIAL ANCHOR SCREW PIN (INTERNATIONAL)



SIZE	WEIGHT	UNIT	LOAD LIMIT	STOCK NO.
1/4"	.066 LBS	EA	NOT RATED	551708
5/16"	.154 LBS	EA	NOT RATED	551710
3/8"	.286 LBS	EA	NOT RATED	551712
7/16"	.396 LBS	EA	NOT RATED	551714
1/2"	.572 LBS	EA	NOT RATED	551716
5/8"	1.10 LBS	EA	NOT RATED	551720
3/4"	1.76 LBS	EA	NOT RATED	551724
7/8"	2.86 LBS	EA	NOT RATED	551728
1"	4.40 LBS	EA	NOT RATED	551732
1 1/4"	9.46 LBS	EA	NOT RATED	551740
1 1/2"	15.40 LBS	EA	NOT RATED	551748

**NOTE: PLEASE STATE BLUE COLORED PIN WHEN ORDERING. NOT FOR OVER HEAD LIFTING!!**

<b>⚠ WARNING</b>
To prevent the possibility of serious bodily injury: * DO NOT EXCEED the working load limits