

CUSTOM MADE STRAPS

PORTA-RATCHET ASSEMBLIES

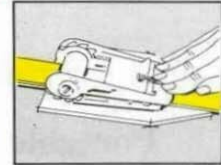
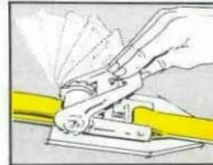
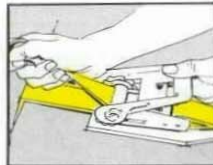
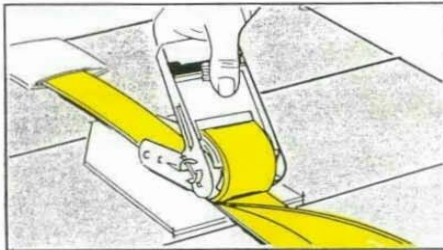
VOLMASTER PORTA-RATCHET STRAPS



Standard porta-ratchet strap is 27'. Other lengths available on request.

NOT TO BE USED FOR OVERHEAD LIFTING.

EASY TO USE



1. Insert end of strap through slot in ratchet reel and pull until snug.

2. Pump handle back and forth to operate ratchet.

3. When straps are tight, put handle down flat to lock and hold the load.

ORDERING INFORMATION

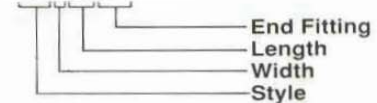
2"x27' Porta Ratchet Assy W/ Flat Hook

| CODE | Style Codes WIDTH |
|------|------------------------|
| PR | 1" Porta-Ratchet Strap |
| PR | 2" Porta-Ratchet Strap |
| PR | 3" Porta-Ratchet Strap |
| CB | 2" Cambuckle Strap |

| CODE | Hardware Codes ITEM |
|------|------------------------|
| FH | Flat Hook |
| DR | Delta Ring |
| SH | Snap Hook |
| WH | Wire Hook |
| CA | Chain Anchor |
| ET | E-Track |

EXAMPLE:

PR227FH




VOLMASTER CAMBUCKLE STRAPS



Standard Cambuckle strap is 27'. Other lengths available on request.

NOT TO BE USED FOR OVERHEAD LIFTING.

END FITTINGS

| | | | | | |
|---|---|---|--|---|---|
|  |  |  |  |  |  |
| FLAT HOOK | DELTA RING | SNAP HOOK | WIRE HOOK | CHAIN ANCHOR | E-TRACK |

WARNING

To prevent the possibility of serious bodily injury:
 • DO NOT EXCEED the working load limits